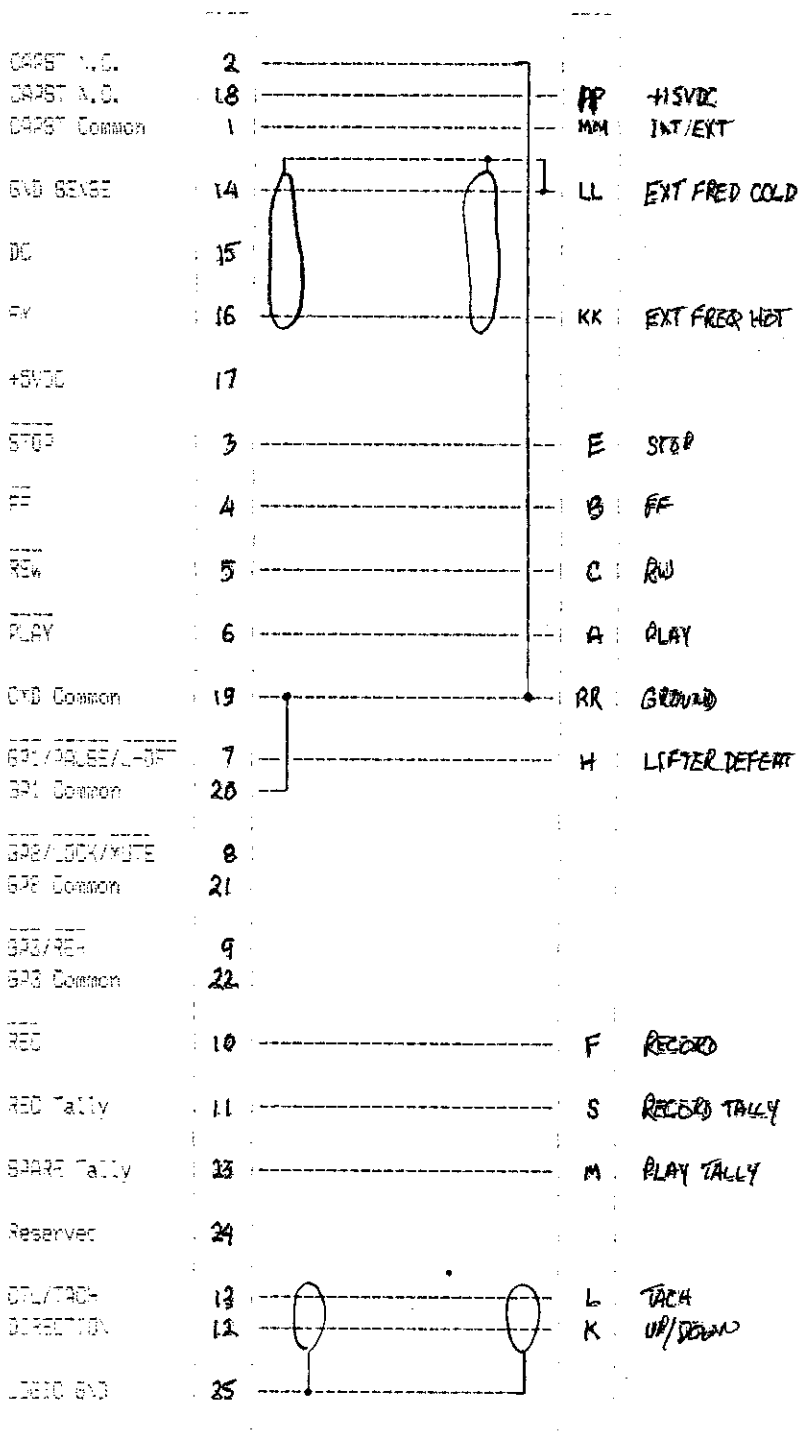


"TRANSPORT"
DINCH 88-852

"ACCESSORY"
ELDD 8816-338-32A-823



CASSTAN CENTER FREQUENCY 515 kHz
 CASSTAN CENTER DC 1.00
 CASSTAN DC RANGE (OR SPEED) 100
 CASSTAN DC POLARITY

TACH RATE AT 15 178 18 18 198 100-1
 TACH RATE AT 15 178 19 20 195 119-1 ATR-80 ONLY
 TACH DIRECTION 0 VDC INDICATES REVERSE

RUNCH IN = REC

RUND- OUT = REC

ADAMS-5017-

Dwn	ZETA-TREE	Date

TASCAM 42/50/60, ATR-80, 15-16,
 388/STUDIO B
 INTERFACE DRAWING

Rev
 036
 -8

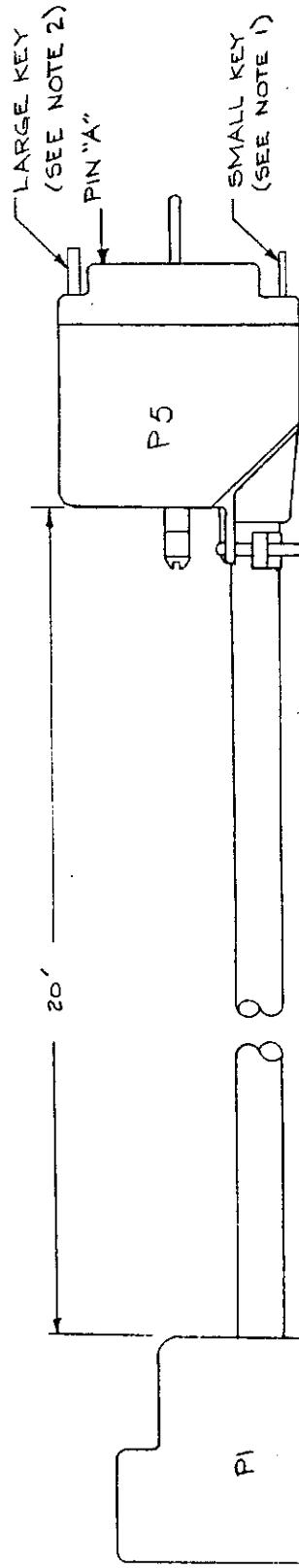
THIS DRAWING IS BASED ON THE LATEST INFORMATION AVAILABLE TO ADAMS-5017- AND IS BELIEVED TO BE CORRECT. HOWEVER, IT IS THE RESPONSIBILITY OF THE USER TO DETERMINE WHETHER ITS USE IS APPROPRIATE IN ANY SPECIFIC INSTALLATION.

ZETA "TRANSPORT"
CONNECTOR
CIACH BB25-3

"ACCESSORY"
ELCO 6016-038-000-603

Name	Pin	Comments	Pin	Name	Pin	Name	Pin	Case
VEL	FR	16		KK		EXT FREQ HOT		
BLK	GROUND SENSE	14		LL		EXT FREQ COLD		
SHld		-		LL		EXT FREQ COLD		
ORG	FF/	4		B		FF		
BLK	STOP/	3		E		STOP		
SHld		-						
GRN	PLAY/	6		A		PLAY		
BLK	REW/	5		C		RA		
SHld	CXD Common	19		RR		GROUND		
BLU	SP/PAUSE/LOFF/	7		H		MASTER DEFEAT		
BLK		-						
SHld		-						
TRN	CA95T Common	1		XX		INT/EXT		
BLK	CA95T N.O.	18		PP		+15VDC		
SHld	CA95T N.C.	2		RR		GROUND		
PURP	SPARE Tally	23		M		PLAY TALLY		
BLK		-						
SHld		-						
RED	REC/	12		F		RECORD		
BLK	REC Tally	11		S		RECORD TALLY		
SHld		-						
GRY	TACH	13		L		TACH		
BLK	DIRECTION	12		K		UP/DOWN		
SHld	LOGIC GND	25						
DND Common	19	0	Jump					
SP: Common	20	0						

60005-8507-
Dwn DATA-REEL Case
REF: 42/50/60, 474-82, 16-16,
358/ST0070 &
EXTREME DIABRY
all 036



NOTES:

1. P5 PLUG, ELCO 8016-038-000-803, SHOULD BE ASSEMBLED SUCH THAT CABLE EXITS THE HOOD ON THE SAME SIDE AS IS THE SMALLER KEY.
2. "PINA" IS ON THE SAME SIDE AS THE LARGER KEY

	SHIELDED CABLE PAIR	20'	MOGAMI	NEGLEX 2714
P5	PINS	12	ELCO	60-8017-05-13
P5	PLUG	1	ELCO	8016-038-000-803
PI	SHELL WITH LOCKING SCREWS	1	JAE	DB-C4-J11-S1
PI	PLUG	1	JAE	DB-25P
ITEM	DESCRIPTION	QTY	MFRG	PART NO

BILL OF MATERIAL

ADAMS.SMITH

DWN		DATE	12-1-84
SGWARD	ZETA ~ THREE	REV	1-21-88
INTERFACE	TASCAM 40/50/60, ATR-80, MS-16,		
CABLE NO.038	388, STUDIO 8		
APPROVED	B 8610-0750	REV	-2

P1

Capst N.C.	2
Capst N.O.	10
Capst Com.	1
Gnd. Sense	14
FM Out	16
+5 VDC	17
DC Out	15
Stop	3
FF	4
Raw	5
Play	6
Cmd. Com	19
GP1	7
GP1 Com.	20
GP2	8
GP2 Com.	21
GP3	9
GP3 Com.	22
Record	10
Rec. Tally	11
Spare Tally	23
Tach	13
Direction	12
Logic Gnd.	25

PP
MM
LL
KK
E
B
C
A
RR
H
F
S
M
L
K

1. P1 = Amphenol 17D-B25P
2. Elco 0015-030-000-003 Connector
3. 50-6017-05-13 Pins

+15vdc
INT/EXT
EXT FREQ COLD
EXT FREQ HOT
STOP
FF
RW
PLAY
GROUND
LIFTER DEFEAT
RECORD
REC TALLY
PLAY TALLY
TACH
UP/DOWN

Rick Austin -- 1-01A-
Adams Smith Zeta III
Interface Harness

Title TASCAM 40/50/60 ATR-80 ETC

Size Document Number A TASCAM00.SCH REV A

Date: January 22, 1998 Sheet of